

# TRANSCEND

---

## 2020-21 FOUNDATION ANNUAL REPORT



FLORIDA POLYTECHNIC UNIVERSITY  
**FOUNDATION®**



# CONTENTS

- 02 President's Message
- 03 Our Economic Value to Our Community and Florida
- 04 Our Vision and Hope • Board of Directors
- 05 Heartland Scholarships Support Rural Areas
- 06 From Kenya to Florida Poly and Beyond
- 08 Corporate Impact Network Provides Engagement Opportunities
- 09 Florida Poly by the Numbers
- 10 From Bagging Groceries to Programmer and Developer at Publix
- 12 Internship to Employee Saddle Creek Logistics Services
- 14 Founding Trustee Supports First-Generation Scholars
- 16 Building Tradition on Campus
- 18 Rankings
- 16 Annual Foundation Report 2021
- 20 Ways to Support Florida Poly



## PRESIDENT'S MESSAGE

I know I speak for our entire Florida Polycommunity when I say thank you to everyone who has supported us in the last year. Florida Poly could not have completed the 2020-21 year so successfully without the tremendous support from the many who care deeply for our University. I'd like to share with you a small sampling of some of the remarkable accomplishments we recently achieved.

In its 2022 Best Colleges list, U.S. News and World Report ranked Florida Poly as the number one public college in the Southern region of the United States and number 26 among public engineering programs without a Ph.D. These rankings are proof of what we already knew: Florida Poly is among the best universities in the nation.

During the 2019-20 academic year, we achieved ABET accreditation in record time, assuring our programs meet essential standards to produce graduates ready to enter STEM fields. We



began our seventh academic year with record freshman enrollment both in quantity and quality, despite the challenges caused by COVID-19. Our fall 2020 freshmen enjoyed average SAT scores of 1327, average ACT scores of 30.1, and an average high school GPA of 4.25. They focused on their academics in classes with a 16:1 student-to-faculty ratio.

Record enrollment and impressive rankings are only part of our

story. We also established new programs, such as Florida Poly's Nuclear Propulsion Pipeline Program. It is the first of its kind in the nation, providing science-minded students with financial support and military guidance as they prepare to seek careers in the U.S. Navy. In addition, the State of Florida has provided the necessary funding to finish our new 90,000-plus-square-foot Applied Research Center. This will provide a modern,

dynamic space for student and faculty research, entrepreneurship, innovation, and connectivity.

We are privileged to be able to share so much exciting news, and we are grateful to those who believe in our mission of serving students and industry through excellence in education, discovery, and application of engineering and applied sciences.

Throughout Florida Polytechnic University Foundation's report, you will read and hear from extraordinary supporters and students rising to the occasion to excel and achieve. Their stories transcend our expectations of what it means to be a part of the Florida Poly community.

Best,

**Dr. Randy K. Avent,**  
President  
Florida Polytechnic University

# OUR ECONOMIC VALUE TO OUR COMMUNITY AND FLORIDA



**F**lorida Poly generates more than \$289 million annually in overall economic activity resulting from the school, according to an economic impact assessment by renowned Florida economist Dr. Rick Harper. This includes more than \$161 million in gross domestic product (GDP) to the local and state economy each year. More than \$72 million of this GDP impact occurs in Polk County.

The increased economic activity due to the presence of Florida Poly flows from several sources, including the University's operations expenditures, its average annual capital outlays, student spending in the community, and the increased income earning potential that accrues to its graduates. The study indicates that about 61% of the University's economic impact is driven by the skills, credentials, and increased earning capacity of graduating students.

"The fields of study offered by Florida Poly ensure that high wages are the norm," Harper said in the assessment. "It is straightforward to see that it is the rigorous teaching and credentialing that Florida Poly offers that will contribute most substantially to regional transformation via successive classes of students."

The study also points out that a Florida Poly graduate will earn \$45,913 more per year than a worker in Florida with only a high school degree. It is the highest average differential of any university in the State University System.

## OTHER KEY FINDINGS IN THE STUDY:

- At current enrollment levels, annual federal, state, and local tax revenue due to the economic impact of Florida Poly is \$38,235,650.
- Florida Poly's annual level of economic activity sustains 2,350 jobs and generates a total of \$97.6 million in wages to workers and income to businesses.
- The average Florida Poly graduate can expect to earn over \$13 in additional personal income for every dollar spent to earn their degree. This compares to \$4.10 for the State University System as a whole.

This return on student investment is especially evident when viewed in context of the University's affordability for students. Florida Poly recently was named number two in the nation for delivering quality, affordable mechanical engineering education by Affordable Schools. Only 16% of the University's graduates hold student loan debt, and of those, the amount is half the amount of the national average. ○

***"These findings show the value that Florida Poly brings the community as a whole. We are confident that as we continue to grow and produce highly-skilled, lifetime employable professionals, the economic impact of our university will be felt even more strongly over time."***

---

**DR. RANDY K. AVENT,**  
UNIVERSITY PRESIDENT

---



# Our Vision and Hope

**W**e have a shared value system — we are optimistic, and we were taught at an early age to pay it forward. From the moment we accepted our roles in leadership for the Foundation, this shared value system has driven our mission of supporting Florida Polytechnic University.

This past year we worked hard building a strong base within the Foundation consisting of a dynamic leadership board and committed volunteers. Amid the throes of COVID-19, we hosted the inaugural Women in STEM awards ceremony virtually. We heard inspirational testimonies from our amazing students and honored women in STEM who are making a difference in our community

and state aligned with our Foundation's mission and vision. We initiated the first Women in STEM scholarship from the proceeds of this event. Optimism abounds.

Paying it forward is what our Foundation is about. We seek support for Florida Poly's strategic initiatives, scholarships, naming rights for facilities, faculty and research, and programs. In fiscal year 2021, the Foundation Board established the Florida Polytechnic University Foundation Board of Directors' Scholarship supporting talented students as they pursue their dream of a STEM degree in higher education. Pay it forward.

We thank you for your support as we transcend and rise above all expectations.



*Alice Hunt*

**ALICE HUNT**  
Board Chair  
Florida Polytechnic University Foundation



*Kathy Bowman*

**KATHY BOWMAN**  
CEO  
Florida Polytechnic University Foundation

## FOUNDATION BOARD OF DIRECTORS

**KATHY BOWMAN**  
CEO, Florida Polytechnic  
University Foundation

**ALICE HUNT**  
Board Chair  
Co-Owner, Hunt Construction

**JACK HARRELL III**  
Board Vice Chair and Chair,  
Nomination Committee,  
Sr. Vice President, Harrell's LLC

**CINDY ALEXANDER**  
Community Leader

**FORD HEACOCK**  
Partner, Heacock Insurance

**BLAKE PAUL**  
Attorney-Partner, Peterson Myers, PA

**TODD BAYLIS**  
CEO/Co-Founder, Qgiv

**MARK BOSTICK**  
Board of Trustee Appointee,  
Chairman, WI Logistics

**PHILLIPA (PIPPA) GREENBERG**  
CEO/Founder, NXT AI

**TRAVIS HILLS '19**  
Information Security Analyst,  
Saddle Creek Logistics Services

**DR. ADRIAN MUHAMMAD**  
Managing Partner, Jackson Shah & Co.

**JOSHUA MCCOY**  
Regional President, SouthState Bank

**IVETTE O'DOSKI**  
President, Ivette O'Doski  
Consulting

**RYAN PEREZ '20**  
Project Manager,  
Electronic Precepts

**DR. MUHAMMAD RASHID**  
President's Delegate Professor,  
Florida Polytechnic University

**LORETTA SANDERS**  
Community Leader

**LAUREN SCHWENK**  
CEO & President, Oakley  
Rhinehart Cassidy, LLC

**HAILEY SKOGLUND**  
Student, Florida Polytechnic  
University

**DONNA SLYSTER**  
CIO, Saddle Creek Logistics Services

**VIC STORY**  
President, The Story Companies

**SERETHA TINSLEY**  
CFO, PenGeo, Inc.

**MICHAEL TSCHANZ**  
Director, Technology and Analysis,  
Walt Disney Parks and Resorts

**RYAN WHITEMORE**  
Chief Investment Officer,  
Florida Funders

# Heartland Scholarships Support Rural Florida

As Florida Polytechnic University grew from a vision to a nationally recognized STEM institution in just eight years, Ford Heacock remained steadfast as one of its staunchest supporters.

"I am very proud of being part of the Florida Poly Foundation and being witness to the birth of the University," said Heacock, a longtime member of the foundation's board and partner of Heacock Insurance.

In 2017, he met Jacob Livingston, then president of the Florida Poly Student Government Association and a native of Sebring, Florida – Heacock's hometown.

"It really got me energized, so I took Jacob down to Sebring one day. We met for a presentation of the Rotary Club and I began to realize that those counties south of us that are kind of rural are not really exposed to the same higher education opportunities," Heacock said.

"I began to think about the idea of a scholarship that would be available to students in the Heartland region of the state."

Heacock contacted the Heartland Education Consortium and worked to establish the Heartland Scholarship Fund for students in Desoto, Glades, Hardee, Hendry, Highlands, and Okeechobee counties who would like to pursue a science, technology, engineering, or math (STEM) degree at Florida Poly.

"I really did it as a personal tribute to my hometown with a deep sense of helping to create more opportunities for the students down there," Heacock said.

During the 2020-21 academic year, three students benefitted from the Heartland Scholarship Fund. Timothy Wigginton, a sophomore computer science major, was among them.

"It was stressful trying to figure out how all the financials were going to work for

college – this was my first time having to live in a dorm and move away from my hometown," the Sebring native said. "Now that I have this scholarship, I can rest a little easier and don't have to focus on that so much."

Wigginton said he hopes to become a software engineer after he earns his degree.

Heacock ultimately would like recipients of the scholarship to return to their home counties and work to make a difference there.

"There's a lot of need in agricultural technology Florida Poly students can provide," he said. "I would like to see more students from there be able to get a high-level, technologically driven education and bring it back to their community."

Heacock said he hopes others will contribute to the fund and help support



**Ford Heacock**

the education of future Phoenixes from the Florida Heartland region. "I'm very proud to be a part of their success."

"They are knowledgeable and in touch with what's going on beyond Florida Poly, and they're landing great jobs in Florida and across the country." ○

***"The area I grew up in was a poorer neighborhood, and the ability to go from a small town like Sebring and break out of the low income and get into a STEM field is very beneficial."***

← Timothy Wigginton '22

# From Kenya to Florida Poly and Beyond

**W**hen Florida Polytechnic University student Stacie Akinyi '21 was a young girl at boarding school in her native Kenya, she showed initiative by selling snacks and sundries to her peers. She soon discovered she had a knack for entrepreneurship that she couldn't ignore.

"I loved the idea of being in business," said Akinyi, who earned her bachelor's degree in business analytics with a concentration in logistics and supply chain management at Florida Poly in May of 2021. "I know in the long-term I want to have my own business, and business analytics seemed like an interesting integration of tech with business. The professors in that department are the best."

As she enters the workplace, Akinyi is eager to put her education to work.



"Although I am scared, I feel super prepared because Florida Poly has given me the resources I need to grow as an individual and as a professional," Akinyi said. "I have the theoretical knowledge of what I need to know in terms of technical skills and my background, and I have also interacted with so many professionals here on campus."

Akinyi said her university experience was made much less stressful through the aid of scholarships like the Florida Poly Scholarship and an Army Emergency Relief scholarship.

"Both helped me study comfortably and not have to worry about the basic needs a typical student striving on their own would have to fret about," she said.

Akinyi completed an internship with Immertec, a medical technology company in Tampa, Florida, and was hired as a supply chain associate after graduation.

"I really love it. It's exactly what I've learned in school and allows me to apply it in the field," she said. "It's also a startup company, so I'm also observing how the company runs and I get to ask a lot of questions about the decisions they make and the things we are doing."

On campus, Akinyi took advantage of many of the

resources available to her, including the University's entrepreneurship resources, to help her prepare for success. She also served as a Presidential Ambassador and was part of organizations such as the National Society of Black Engineers, the Society of Women Engineers, Rotaract, and the Diversity Club.

As a Black woman, Akinyi said she has had to grapple with the problems of being overlooked or underestimated. She learned to assert herself and claim her rightful place in academic and professional settings.

She added it's important for women in STEM fields to stand firm and trust in their abilities.

"Sometimes, if I'm the only female on a team project, a male partner would put their foot forward and take the initiative assigning me the less important tasks," she said. "As a female, it's insulting because they feel they can do the hard work and want me to just do the small things."

She said it's important for women to voice their concerns and stand up for themselves, especially in male-dominated fields.

"The key is be aware of it and don't let anything get in your way. Don't take anything too personally." ○

***"Florida Poly has given  
me the resources I need  
to grow as an individual  
and as a scholar."***

← Stacie Akinyi '21 →



Stacie Akinyi received her bachelor's degree in business analytics from Florida Polytechnic University in May 2021.

# Corporate Impact Network Provides Engagement Opportunities

**C**orporations with a strong desire to support technological innovation and with the need access to top science, technology, engineering, and math (STEM) talent can accomplish both missions through the Corporate Impact Network, an effort of Florida Polytechnic University.

The Corporate Impact Network offers a robust array of recognition and engagement opportunities, which vary by level of philanthropic commitment, starting at \$10,000 to \$100,000 + for a 3-year term.

"The Florida Poly Corporate Impact Network recognizes corporations



committed to our University. Our partners' mission to attract and engage talented students in STEM disciplines is accomplished through active engagement and merit-level partnerships. They benefit by becoming part of the Florida Poly family" said Lidia Vigil, director of corporate and foundation relations at Florida Poly. ●



**PAULA REED**

**Director of Corporate and Foundation Relations**

863-874-8571  
preed@floridapoly.edu

Liaison to Tampa Bay, West,  
North Florida

Academic: Computer Science



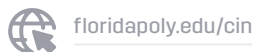
**LIDIA VIGIL**

**Director of Corporate and Foundation Relations**

863-874-8732  
lvigil@floridapoly.edu

Liaison to Orlando, Miami,  
East Florida

Academic: Engineering



---

**Contact the Corporate and Foundation Relations team to determine how your company can benefit from becoming a Corporate Impact Network partner.**

---



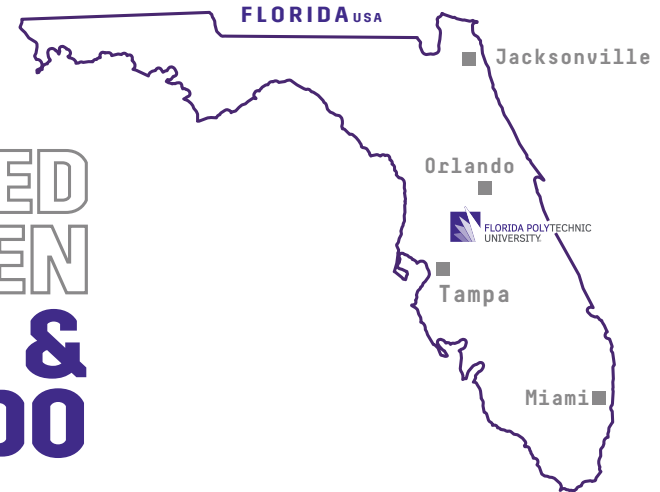
# FLORIDA POLY BY THE NUMBERS

**57%** IN THE  
TOP 25% OF  
THEIR HS CLASS

**4.25** HIGH  
SCHOOL  
GPA

**16%** OF GRADS  
HAVE STUDENT  
DEBT

CENTERED  
BETWEEN  
**TAMPA &  
ORLANDO**



**1327**  
SAT



**30.1**  
ACT



Computing &  
Engineering  
Accreditation  
Commissions



**16:1**  
STUDENT FACULTY RATIO

# From Bagging Groceries to **PROGRAMMER AND DEVELOPER AT PUBLIX**

**W**hen Greg Willard '20 took a high school job packing and bagging grocery items at Publix Super Markets, he never imagined his time with the company would evolve from the supermarket floor to its website's technological infrastructure.

"I started as a bagger and worked my way up to customer service clerk – it's a good company to work for," said Willard, from Naples, Florida.

Willard earned his bachelor's degree in computer science with a concentration in cybersecurity in 2020. Today, he is a programmer and developer for the Lakeland, Florida-based grocery chain, working to refine its website's in-store pick-up section, where customers can order cakes, subs, and other items online.

"It was cool to be able to go from working in a store and knowing how stuff worked and playing with the website in my free time, figuring out how certain parts of it worked,

---

Greg Willard '20 is a programmer and developer for Publix Super Markets. He started his career at the Lakeland, Florida-based grocery chain as a bagger while still in high school.

# COMPUTER SCIENCE STATS

AT FLORIDA POLY WE'RE EDUCATING  
THE NEXT GENERATION OF STEM  
LEADERS

## #1

Ranked by job site Glassdoor for undergraduate  
majors ranked by median base salary (\$70,000).

## 10

Top identified skills according to LinkedIn  
researchers were all computer skills, including  
expertise in cloud computing, data mining and  
statistical analysis, and writing smartphone  
applications.

## 73%

Of growth in STEM jobs will be in computer  
occupations, according to a study by the  
Bureau of Labor Statistics.

to really working with the website," Willard said.  
"Knowing a lot about how the in-store processes  
work helps."

As a student at Florida Poly, he had the opportunity  
to complete an internship with Publix and stayed  
with the company while he finished his degree.

"We're always striving to make our website acces-  
sible to people with disabilities and there's a lot of ADA  
(Americans with Disabilities Act) compliance items  
we're working on to try to better the experience for  
people with disabilities while keeping the same function-  
ality for everyone else," he said. "We view accessibility as  
an ongoing effort and are continually seeking solutions  
that will ensure accessibility to all users."

Willard said his cybersecurity concentration has  
been pivotal in his workplace success.

"I'm always thinking, 'What if there's a way to  
perform a code injection attack via this particular  
feature we're adding or change we're making,'" Willard said. A code injection is a type of attack that  
involves injecting code into an application that is  
then interpreted or executed by the application. "I  
always remain aware of that and try to see it from  
the security side of things."

Willard said he is grateful for both his Florida Poly  
education and the opportunities he has received  
with Publix Super Markets. He's excited to see that  
his hard work is paying off. ●

*"It's satisfying to be able to  
work for a company that  
I have such a long history with  
and be able to use the skills  
I gained at Florida Poly to help  
contribute to their success"*

Greg Willard '20



# INTERNSHIP TO EMPLOYEE

## Saddle Creek Logistics Services



**E**arly in his college days at Florida Polytechnic University, Travis Hills '19 began an internship at Saddle Creek Logistics Services that changed the trajectory of his professional life.

"I was a freshman about to be a sophomore, so I was a little odd and nervous, but it was a good opportunity, and it was definitely right for me," said Hills, who graduated in 2019 with a degree in computer science and concentration in cybersecurity. "The internship was supposed to be for six months, but they just kept me."

His internship eventually spanned three years and the Lakeland, Florida-based supply chain solutions company then hired Hills as an information security analyst.

Nathan Everson, Hills' supervisor, said Hills has become a strong asset to the team.

"Travis has done a tremendous job bringing new ideas to our existing culture," said Everson, senior manager of information security and data privacy officer at the company. "A company like ours that has been around for 50-plus years can get used to doing things the same way, and he's come in with some innovative ways of solving problems."

---

***"It's been really rewarding to be part of the Foundation board and hear the things Florida Poly is doing and how other people feel about the University."***

→ Travis Hills '19 ←



Travis Hills '19 began an internship at Saddle Creek Logistics Services the summer after his freshman year at Florida Polytechnic University. Today, he is an information security analyst at the supply chain solutions company based in Lakeland, Florida.

When it came time for graduation and Hills transitioned into a full-time role, his early trepidation was replaced by confidence, competence, and a desire to continue learning.

"It's definitely something new every day," said Hills, who was student body president during his senior year at Florida Poly. "It's always interesting and always challenging."

Hills' attitude has earned him a dynamic spot at the company, Everson said.

"He's always been one to dive right into something, and if it's not something he knows, he has no issue with doing the research, learning, and picking up on it really quickly," Everson said. "For example, we deployed a new tool and nobody in the company knew anything about this tool, but since we deployed, Travis has become the expert by attending conferences and trade shows, and while helping himself to grow he has helped the company grow along with him."

In 2019, Hills joined the Florida Polytechnic University Foundation Board of Directors. He said the experience

has enriched his understanding of the University's student body and fostered an even deeper affection for his alma mater.

"Being on the board, I get to see where all the grassroots and community passion comes from," he said. "I love knowing the force behind the scholarships and being able to hear the success stories of the students. It's been really rewarding to be part of that body and hear the things Florida Poly is doing and how other people feel about the University." ○



Robert Gidel

## Founding Trustee Supports First-Generation Scholars

**W**hen a vision for the first state university dedicated entirely to STEM began to blossom in 2012, Robert Gidel was tapped to join Florida Polytechnic University's first Board of Trustees and help guide the creation of the new institution.

Nearly a decade later, Gidel is proud of the distinguished position Florida Poly has carved for itself among Florida's 12 state universities.

In the years since Florida Poly opened in 2014, the University has achieved accreditation by the Southern Association of Colleges and Schools Commission on Colleges (SACSCOC) and by the Computing and Engineering Accreditation Commission of ABET, attracted leading faculty, and become a model for the delivery of affordable,

***"This is an achievement from a lot of people who took risks – everybody who came to work at and attend a school that was unaccredited, didn't have any students, or any real assurance that it was going to succeed"***

**- Robert Gidel**

high-quality education in science, technology, engineering, and math (STEM). It also has enjoyed multiple state and national rankings, including being listed among the top 2021 nationally ranked engineering programs by U.S. News & World Report.

"The county and the state of Florida benefit from this University," said Gidel, who lives in Sarasota, Florida. "So do all of the students who may not have been able to pursue this kind of education at other universities, who now have great opportunities to use their talents to contribute to the future economic viability of Florida."

To help advance this access to opportunity, Gidel and his wife, Linda Gidel, made a commitment of \$100,000 to Florida Poly, benefiting first-generation scholars.

"I'm a first-generation college graduate in my family," said Robert Gidel, managing partner of Liberty Capital Advisors LLC. "You see what opportunities can be realized by students who might not otherwise be able to go to college and you see the obstacles they overcome and what they achieve."

As the University continues to grow, Robert Gidel said its potential is limitless. ○



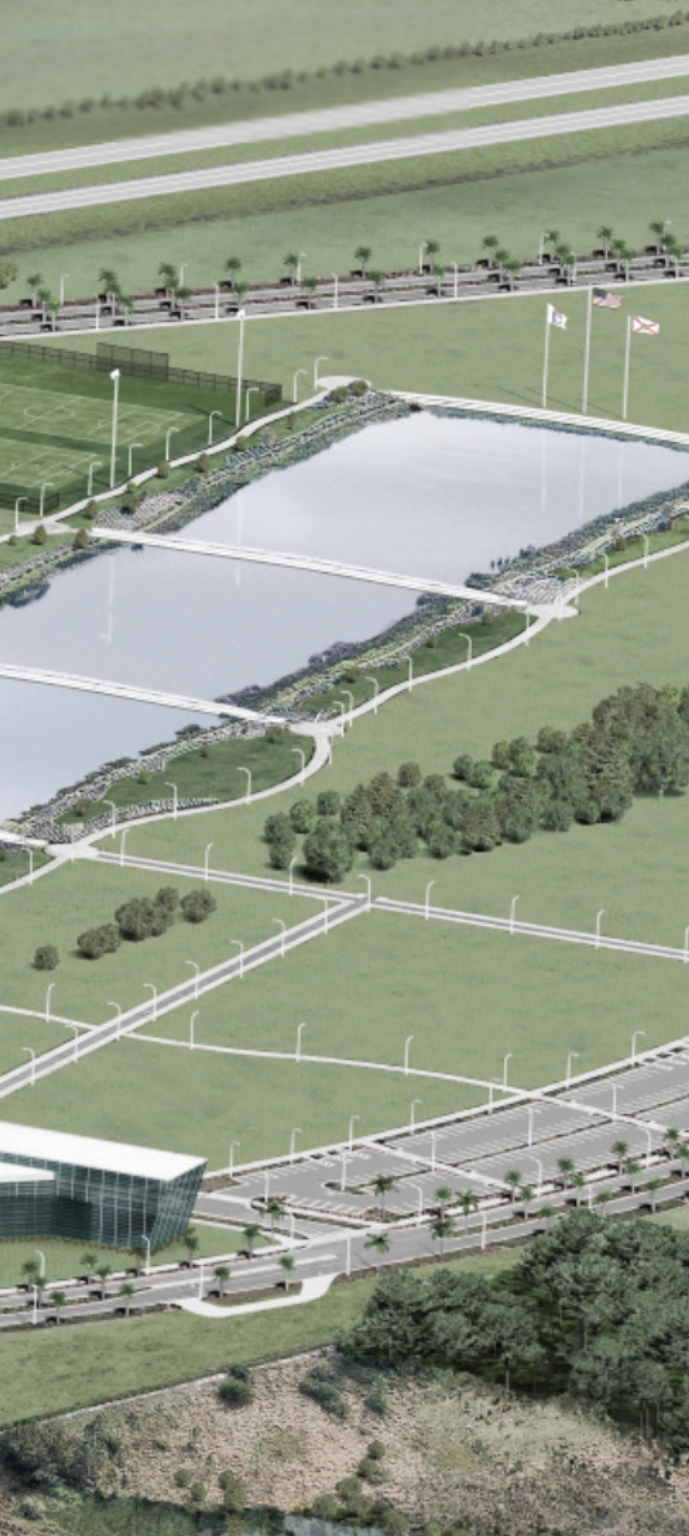
*"Florida Poly to me is a home away from home. It is a place where I pursue my dreams and take advantage of spectacular opportunities I wouldn't get anywhere else. The environment and the community I now belong to are something I wouldn't trade for anything else. I love the people, connections, and contributions I was a part of, impacting the University as well as myself! It is a place where I've had my biggest growth, made many best friends, and learned most about myself. "*



Ritchel Calvaire '21

# BUILDING TRADITION ON CAMPUS





Invest in Florida Poly by naming priority infrastructure and facilities providing rich environments that inspire ideas, develop innovative solutions, and create lasting traditions on Florida Poly's campus.

### ADMISSIONS CENTER

The Admissions Center was the University's first on-campus building to open to the public in December 2013. This is the **first stop and gateway** for prospective students and their families.

### APPLIED RESEARCH CENTER

The new 90,000+ square foot ARC will house **research** and teaching laboratories, student design spaces, conference rooms, and faculty offices. The building will also provide study areas for graduate students and a small amount of administrative space.

### RESIDENCE HALLS 1 AND 2

Our residence halls are steps away from the heart of academia and feature amenities such as study lounges and computer centers, and access to fitness and gaming rooms. From the technology required for today's students to the comforts of home, the residence halls are designed with the modern student in mind. Comfortable, secure and fully furnished, the three- and four-bedroom suites have the latest technology and accommodations to make **learning and living outside the classroom** comfortable and easy.

### INNOVATION, SCIENCE, AND TECHNOLOGY BUILDING

The IST Building has garnered 23 national and international architectural and design awards and was ranked as one of the 16 "most breathtaking" buildings in the world. This building **represents the innovation and technology** Florida Poly is known for.

### OAK GROVE

The Oak Grove provides students with a place for **contemplation and respite** from the rigorous stresses of their academic work. The oak trees create a serene location.

### STUDENT DEVELOPMENT CENTER

The SDC is home to group **fitness** classes, cardio and strength training, personal wellness/nutrition coaching, and an outdoor competition-sized swimming pool. It's also home to the University's **Esports Arena** and is shaped like a Phoenix.

### WELLNESS CENTER

The Wellness Center houses Florida Poly's **dining** center and **health** clinic, as well as the **Auxiliary Enterprise Service Center** and **Student Business Services**. The **Nest** opened in September 2021.

# RANKINGS

# FLORIDA POLY RANKED #1

PUBLIC COLLEGE IN THE SOUTH

AND NATIONALLY RANKED

# #26 PUBLIC ENGINEERING SCHOOL WITHOUT A PH.D.

**BEST  
COLLEGES**

**U.S. News**  
& WORLD REPORT

REGIONAL COLLEGES  
PUBLIC  
2022

**BEST  
COLLEGES**

**U.S. News**  
& WORLD REPORT

ENGINEERING PROGRAMS  
2022

# #1

## **PUBLIC COLLEGE** IN THE SOUTH

Florida Polytechnic University has been ranked the number one public college in the Southern region of the United States by U.S. News and World Report. It is Florida Poly's first appearance on that list.

# #3

## **AMONG ALL COLLEGES**

(PUBLIC AND PRIVATE) IN THE SOUTH

In its 2022 Best Colleges list, U.S. News and World Report ranks Florida Poly third among all top colleges in the Southern United States, including public and private.

# #26

## **PUBLIC ENGINEERING PROGRAMS** WITHOUT A PH.D.

The University was ranked nationally at number 26 among public engineering programs without a Ph.D. The ranking comes only a year after the University's strong debut in the top of 40 public colleges in this category. Among nearly 240 public and private undergraduate engineering programs, Florida Poly jumped 19 spots to number 53 from number 72 last year, showcasing the University's booming progress in engineering education.

# #14

In the U.S. for **best career outcomes** for students, right behind Harvard and ahead of Stanford University, according to WalletHub's 2021's Best College & University Rankings.

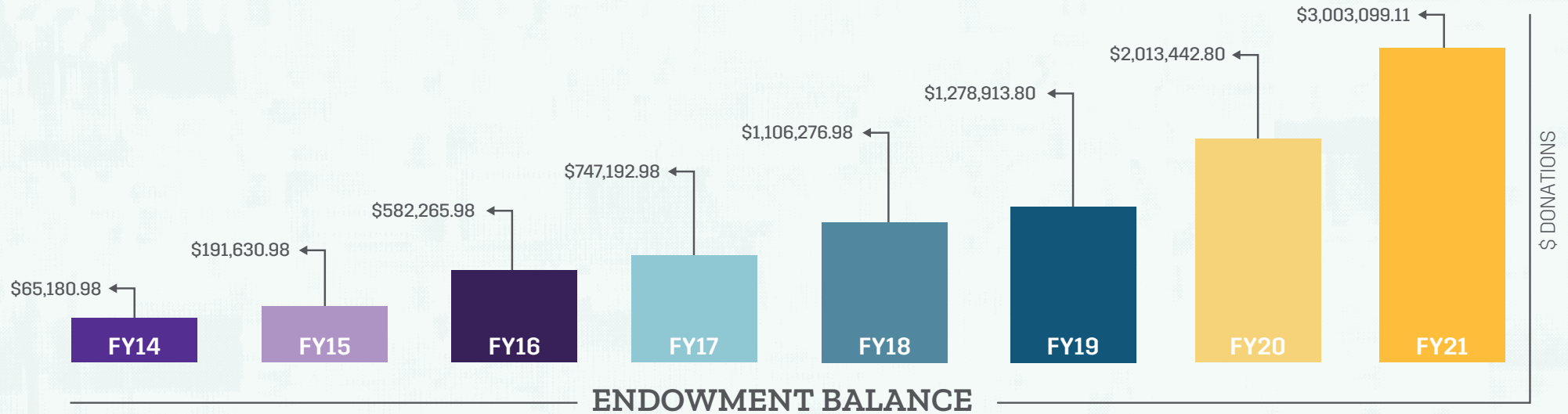
# #3

Among all public universities in Florida for **top performance at a low cost**, according to WalletHub's 2021's Best College & University Rankings.

# #1

**Lowest out-of-state tuition** among American colleges and universities by ValueColleges.

# ANNUAL FOUNDATION REPORT 2021



## SUMMARY - FY21 STATEMENT OF ACTIVITIES YEAR OVER YEAR • JULY 1, 2020 - JUNE 30, 2021

	UNRESTRICTED	TEMPORARILY RESTRICTED	PERMANENTLY RESTRICTED	TOTAL FY21	YEAR OVER YEAR FY21 TOTALS	VARIANCE
<b>REVENUE</b>	<b>\$360,212.55</b>	<b>\$346,402.58</b>	<b>\$835,978.26</b>	<b>\$1,542,593.39</b>	<b>\$963,098.07</b>	<b>60.17%</b>
<b>EXPENSES</b>						
• Operations	\$151,781.78	\$25,557.65	\$4,933.67	\$182,273.10	\$417,337.79	(56.32%)
• Advocate	\$174,225.00	\$0.00	\$0.00	\$174,225.00	\$57,000.00	205.66%
• Scholarships	\$169,950.71	\$379,475.82	\$0.00	\$549,426.53	\$290,000.11	89.46%
• Salaries/Benefits/Initiatives	\$150,000.00	\$0.00	\$0.00	\$150,000.00	\$241,797.00	(37.96%)
<b>TOTAL EXPENSES</b>	<b>\$645,957.49</b>	<b>\$405,033.47</b>	<b>\$4,933.67</b>	<b>\$1,055,924.63</b>	<b>\$1,006,134.90</b>	<b>-4.95%</b>
<b>FY21 Net Asset Gain/Loss</b>	<b>-\$285,744.94</b>	<b>-\$58,630.89</b>	<b>\$831,044.59</b>	<b>\$486,668.76</b>	<b>-\$43,036.83</b>	<b>1195.97%</b>

60.17% increase in  
**REVENUE**  
from FY20 to FY21

60.14% decrease in  
**OPERATIONS EXPENSE**  
FY20 to FY21

89.46% increase in  
**SCHOLARSHIP EXPENSE**  
FY20 to FY21

The Foundation's focus during the past fiscal year was reducing operational expenses providing more funds directed to student scholarships.

We transcended our expectations by reducing expenses by 19.77%. This reduction in expenses coupled with increased fundraising created a +89.46% increase in funding for scholarships.

A key objective President Avent identified for fiscal year 2021 was increasing the Foundation's endowment fund. We are excited to report the endowment increased from \$2 million to \$3 million over the past fiscal year. The endowment creates a lasting legacy of support for Florida Poly student support and we are grateful for the continued support. Thank you to our generous donors for believing in our vision.



## WAYS TO SUPPORT FLORIDA POLY

---

### Give to the Florida Poly Innovation Fund

*Big, real-time impact allowing you to support the University's greatest needs.*

### Create an Endowment

*Enduring gifts invested and nurtured over time provide Florida Poly with a stable source of funding while helping promising students, supporting top-flight faculty, and enhancing vital research initiatives and programs.*

### Plan a Deferred Gift

*Whether you would like to put your donation to work today or benefit the University after your lifetime, there are charitable solutions to provide for your family and support Florida Poly.*

### Give in Honor or Memory

*There is no greater honor than to pay tribute to a living or departed family member, friend, or mentor by supporting the University and students by creating a lasting impact in their name.*

### Match your Gifts

*Numerous companies and donors are willing to match your charitable gifts to Florida Poly, dramatically increasing your impact.*

---







FLORIDA POLYTECHNIC UNIVERSITY  
**FOUNDATION®**

4700 Research Way, Lakeland, FL 33805  
[www.foundation.floridapoly.edu](http://www.foundation.floridapoly.edu) • 863-874-8700